

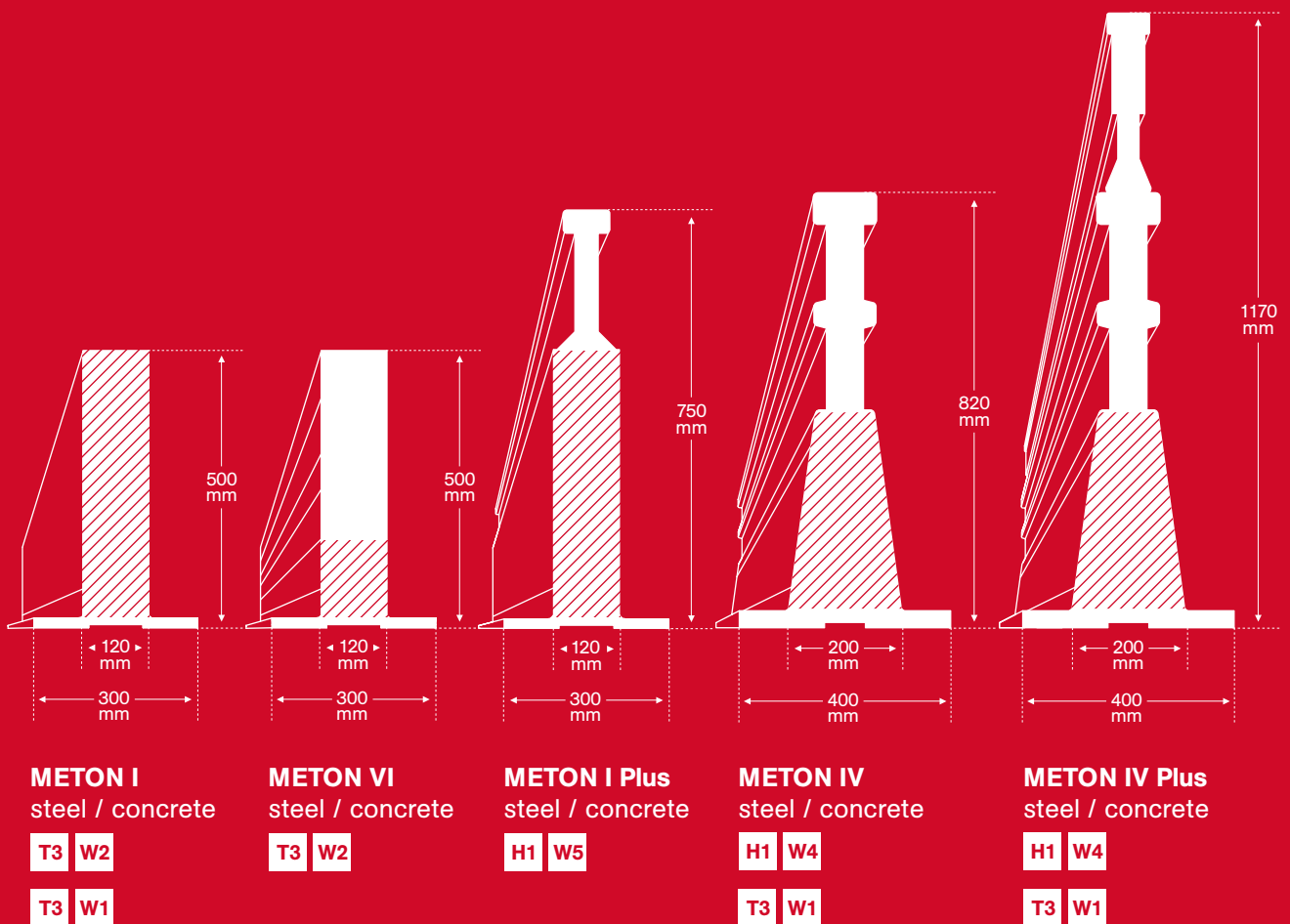


METON®

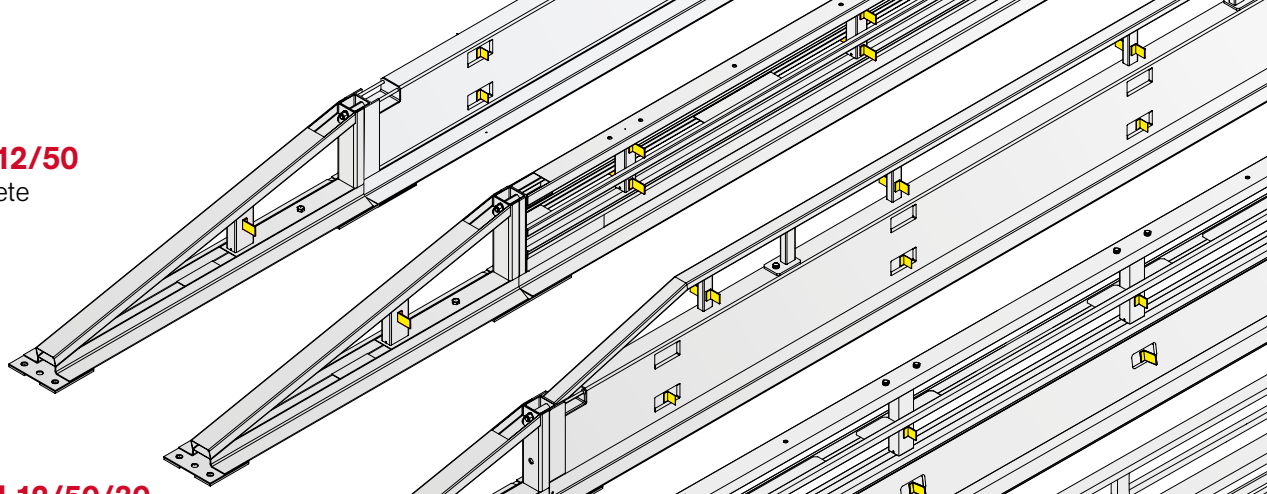
ÖKONOMISCHE
VERKEHRSSICHERHEIT

Temporary Safety Barriers Mobile Protective Wall

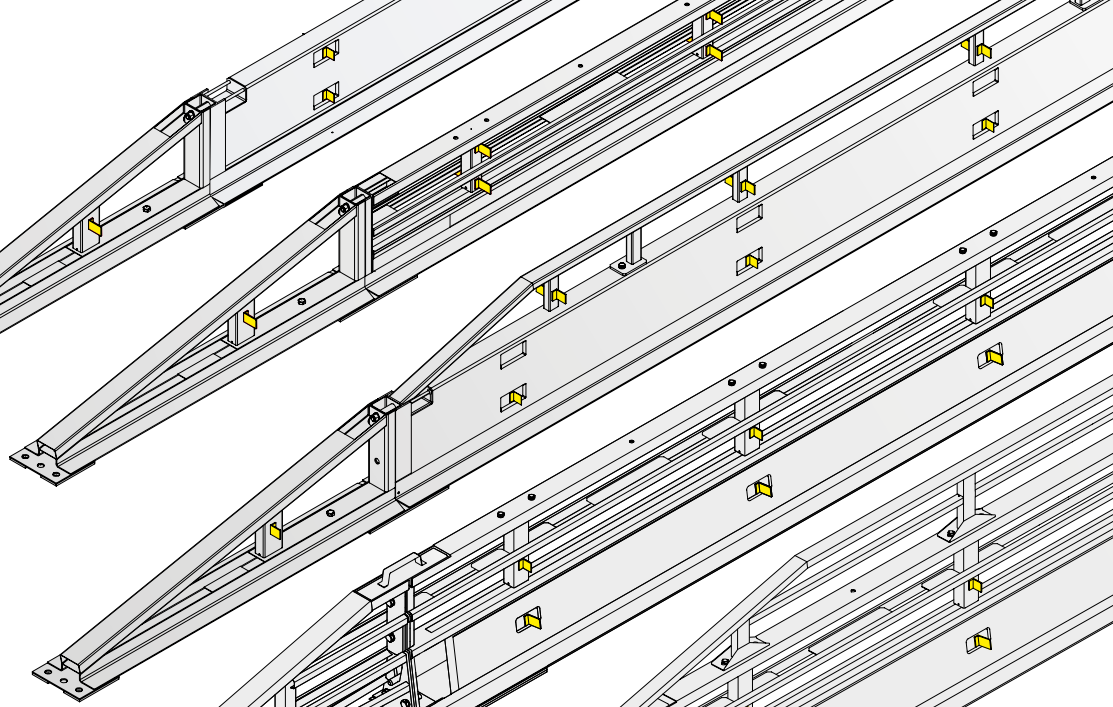
for streets and motorways
as mobile barriers for vehicles
according to DIN EN 1317



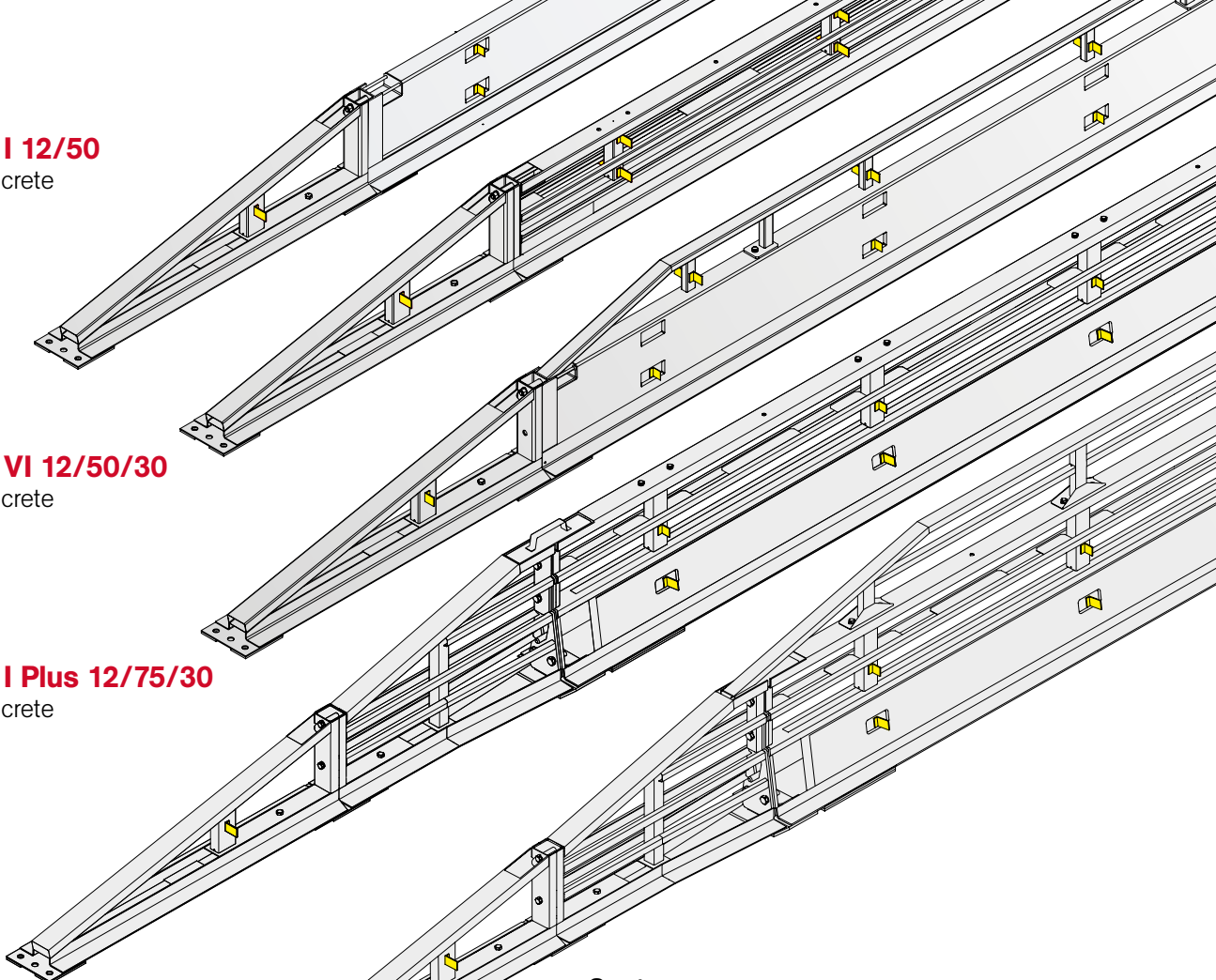
System
METON I 12/50
steel / concrete



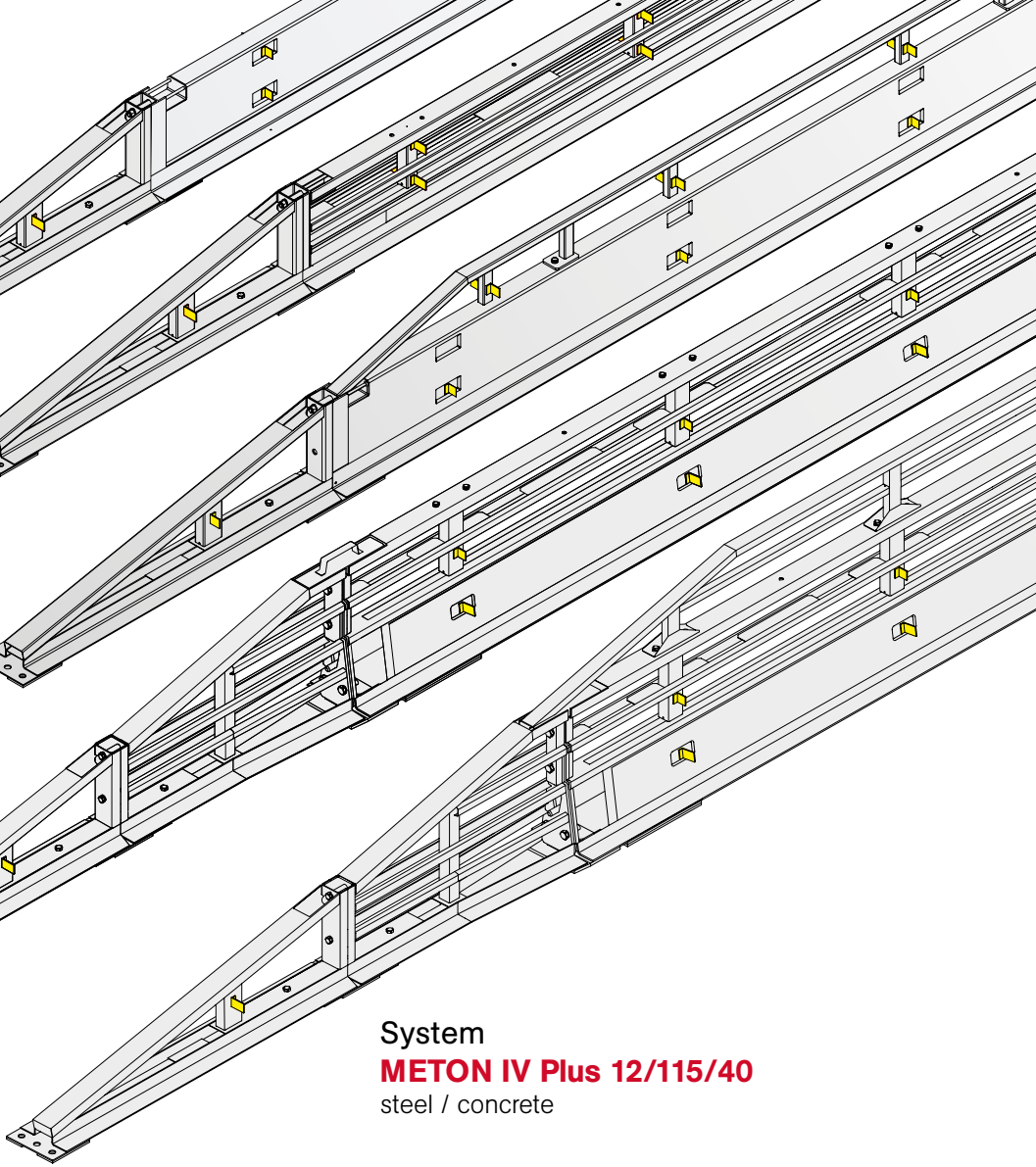
System
METON VI 12/50/30
steel / concrete



System
METON I Plus 12/75/30
steel / concrete



System
METON IV 12/80/40
steel / concrete



System
METON IV Plus 12/115/40
steel / concrete

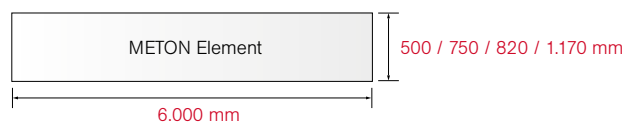
Reinforced steel/concrete crash barrier system

Our experience from the past paired with our competent knowledge of the raising demands of road safety have created our unique METON products in the field of portable guards and mobile protective walls. Our system combines the high protective effects of heavy systems with the benefits of an easy transportation usually only found in lighter systems.

Our system is easy to use, highly cost-effective, and provides our customers with a state of the art performance.

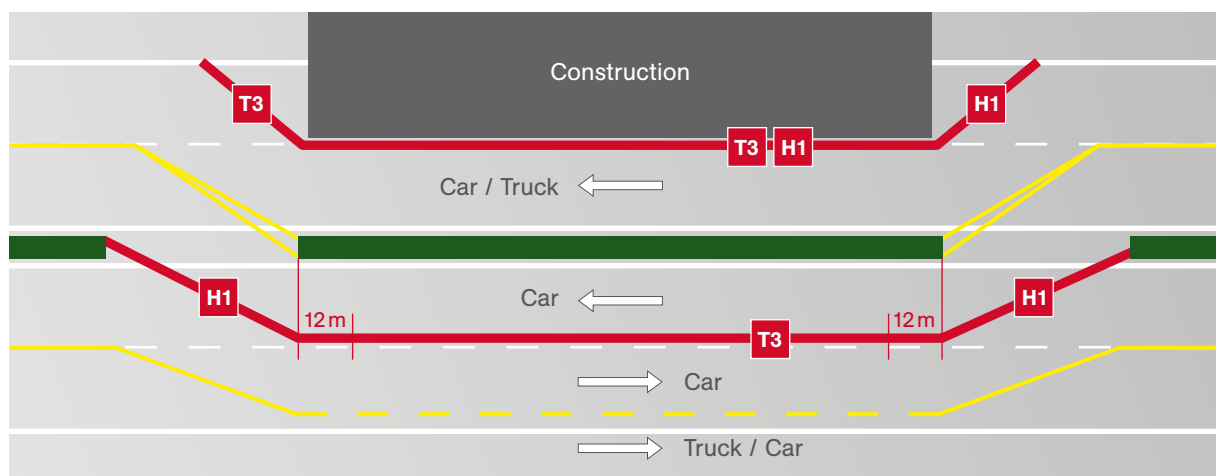
The materials we use are a combination of hot galvanized steel and concrete.

The mounting surfaces are provided with a rubber pad for different road surfaces.

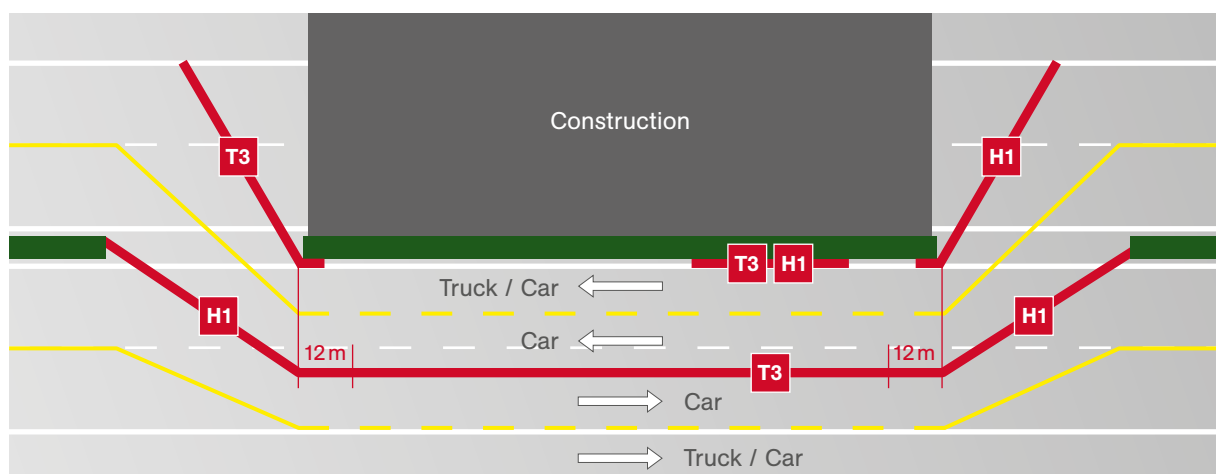


Exemplary traffic routings

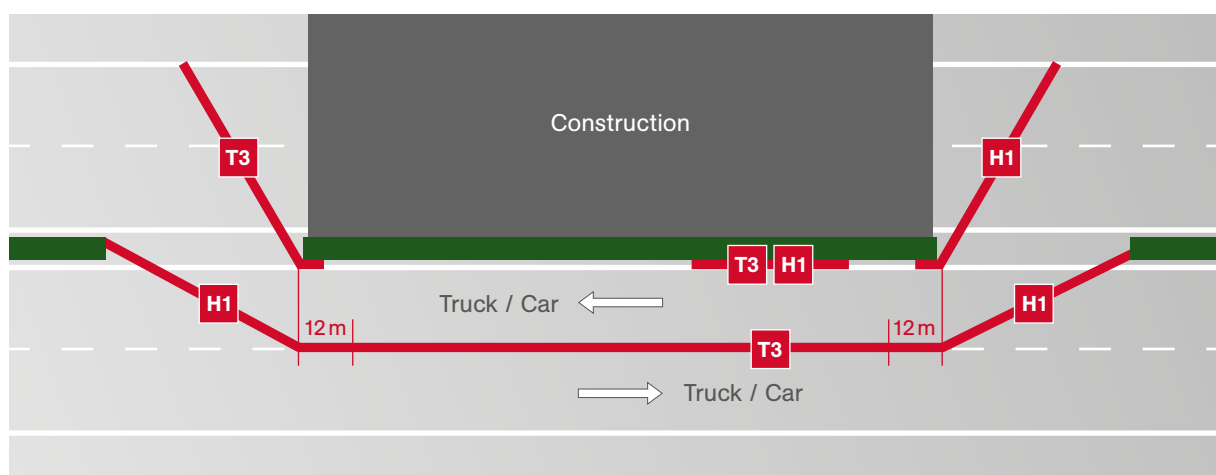
1.



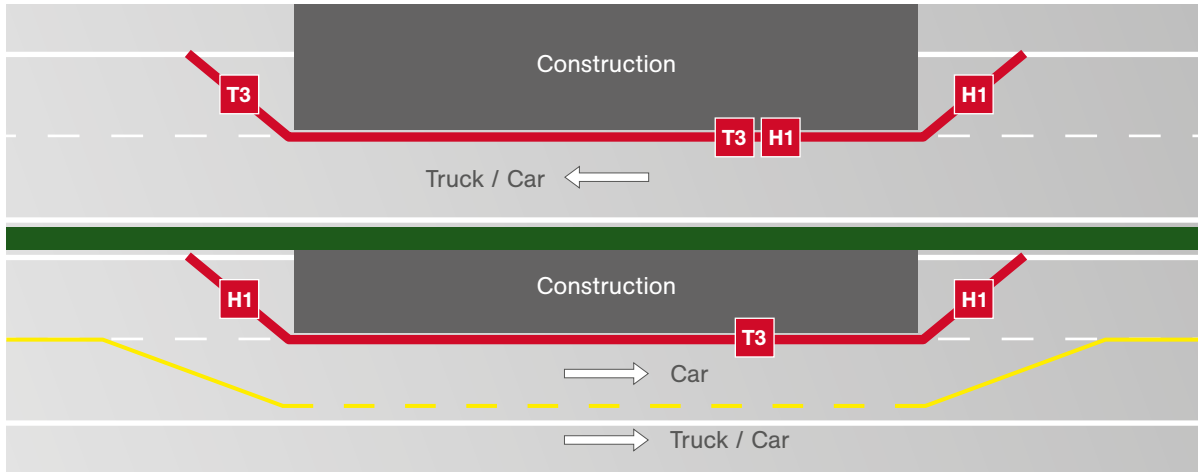
2.



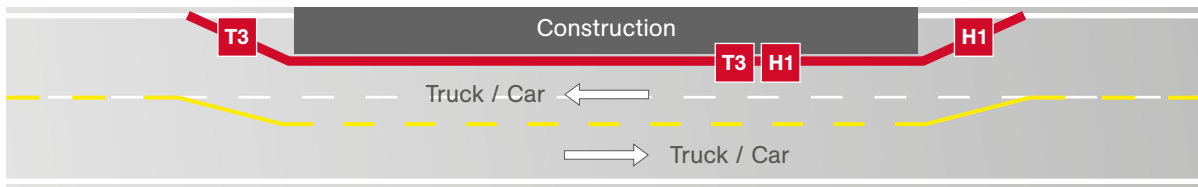
3.



4.



5.



Overview

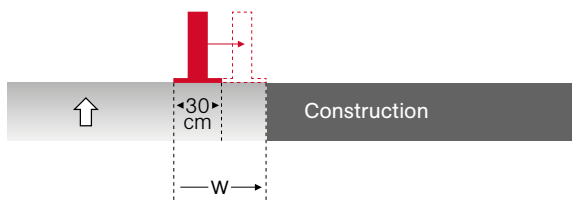
Class	System	Height	Width	W
T3	METON I 12/50	0,50 m	0,30 m	W2
	METON I 12/50 FD	0,50 m	0,30 m	W1
	METON VI 12/50/30 FD	0,50 m	0,30 m	W2
	METON IV 12/80/40 FD	0,82 m	0,40 m	W1
	METON IV Plus 12/115/40 FD	1,17 m	0,40 m	W1
H1	METON I Plus 12/75/30	0,75 m	0,30 m	W5
	METON IV 12/80/40	0,82 m	0,40 m	W4
	METON IV Plus 12/115/40	1,17 m	0,40 m	W4

As our METON systems are quite narrow broader space remains to be used as working area as well as a wider traffic area.

Class = containment level
W = working width classes

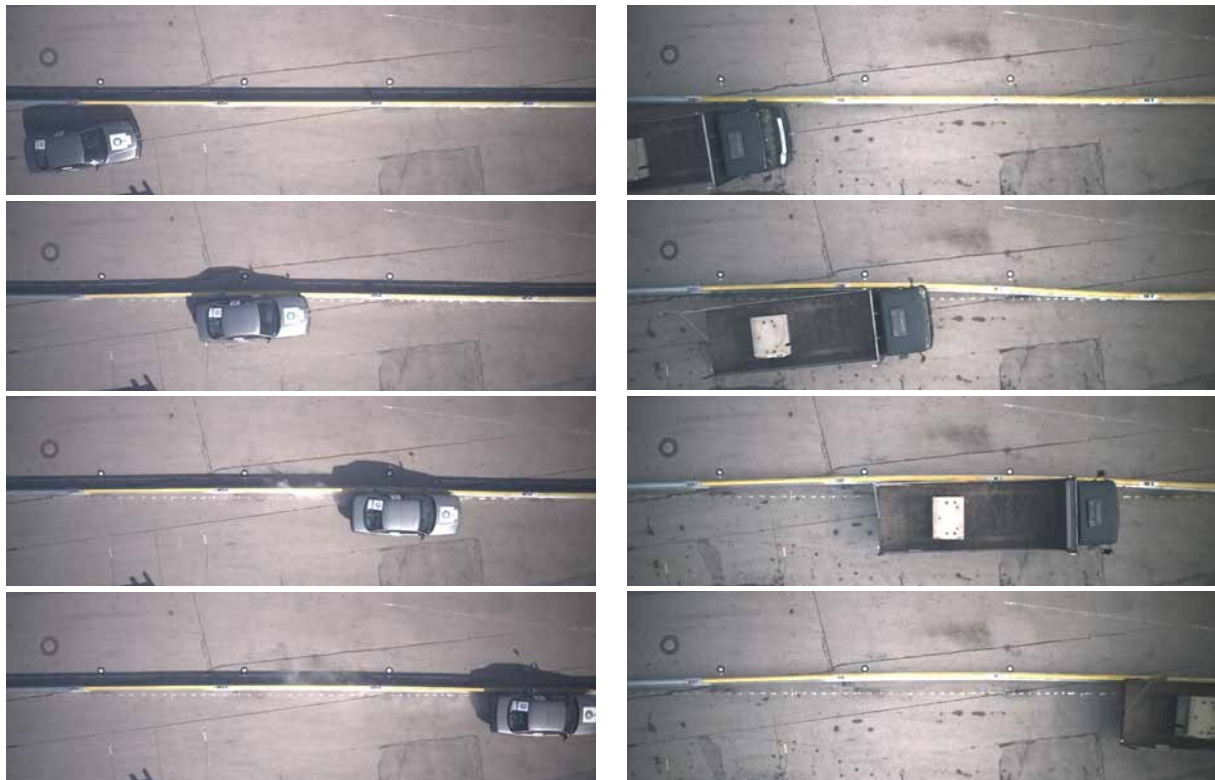
Example working width (System T3 / W2)

i.e. W2 = 80 cm,
System width 30 cm + 50 cm free space





Collision test TB11 / TB42 (Example: METON I Plus / H1, W5)

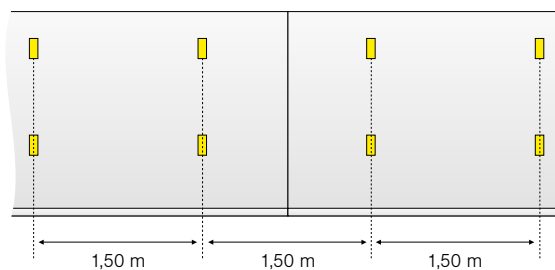
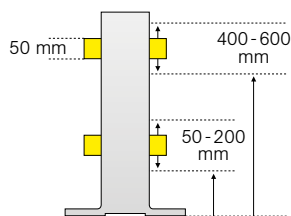


The suitability of different containment levels has been tested and certified by TÜV-Süd in Munich.

Reflectors

Reflectors guarantee for an impeccable visibility of the portable guards also in darkness and even under adverse weather conditions. This leads to a higher traffic safety.

The reflectors are attached to the portable guards in two rows and all reflectors have the same distance to each other.



METON GmbH

Seegfelder Straße 11 | 14612 Falkensee
T: (0)3322 42 97 88-1 | F: (0)3322 42 97 88-2

METON GmbH Betriebsstätte

Flugplatzstraße Geb. 9805 | 55768 Hoppstädten-Weiersbach
T: (0)6782 98 99 43-0 | F: (0)6782 98 99 43-9

info@meton.eu | www.meton.eu



M E T O N[®]

ÖKONOMISCHE
VERKEHRSSICHERHEIT